



CSE: **SASY**  
400 – 1681 Chestnut Street  
Vancouver, BC V6J 4M6  
[SassyGold.com](http://SassyGold.com)  
[info@sassygold.com](mailto:info@sassygold.com)

# SASSY DISCOVERS NEW HIGH-GRADE GOLD VEIN AT WESTMORE

**VANCOUVER, British Columbia, March 3, 2023** – Sassy Gold Corp. (“Sassy” or the “Company”) (CSE: **SASY**) (FSE: **4E7**) (OTCQB: **SSYRF**) continues to expand the 4Amigos Vein along strike and to depth and has drilled into a new high-grade vein parallel to 4Amigos at the Company’s Westmore Gold Discovery, part of its 100%-owned Foremore Project in Northwest British Columbia’s prolific Eskay Camp, 45 km northeast of the Eskay Creek mine.

## **Drilling Highlights:**

- Eighteen of 19 drill holes in the 2022 program, totaling 3,740 meters (m), intersected mineralization at Westmore, the highest percentage of “hits” since Westmore drilling began in 2020;
- Drill hole WM22-033 resulted in the discovery of a new vein 20 m north of 4Amigos, highlighted by **74.6 g/t Au** over 0.35 m starting just 27.65 m downhole with numerous flecks of VG (visible gold) noted;
- Sassy now has 19 drill hole pierce points into the 4Amigos Vein. A higher-grade section of the vein >150 meters in strike, and approximately 90 meters below surface, has grades that range from 1.1 g/t Au over 0.60 m to **86.4 g/t** over 0.70 m;
- Drilling successfully intersected the quartz stockworks system that defines the south cliff of Westmore with intercepts up to **11.55 g/t Au** over 0.59 m within this structure. The Company has also developed a new vein corridor, the South Cliff vein corridor;
- One of the last drill holes of the 2022 campaign (WM22-035) cut three separate mineralized intervals, including two at depth with grades as high as 5.82 g/t Au in quartz veining, to confirm that gold mineralization occurs at the Westmore intrusive over ~470 m in the vertical dimension;
- Gold occurring in quartz veins, in granodiorite at depth, suggests the Westmore intrusive continues south of the southern cliff exposure and possibly deep under the More Creek Glacier to the south and east.

Mr. Mark Scott, Sassy President and CEO, commented: “The Westmore discovery is in its early stages and continues to impress our geological team. Extensive surface mineralization has now been traced to a depth of nearly 500 meters in drill core after a successful program in 2022, with over two dozen veins now identified, yet the source of this mineralization remains unknown.”

Mark Scott concluded: “As our understanding of this Eskay Camp system evolves through continued drilling, we would expect to see wider intercepts and high grades typical of other deposits in this prolific district. Just a few years ago, Westmore was an unknown target without a single drill hole into it. The systematic process we have followed over three short Eskay field seasons is how important discoveries are made in this region.”

## **Westmore Discovery Highlights:**

- Sassy has now drilled 36 holes or 7,908 meters at Westmore and continues to better define the high-grade mineralization associated with numerous quartz veins first recognized in a surface discovery late in the 2019 field season;
- It is now apparent that the quartz veins occur in individual quartz vein corridors. Within these corridors occur the dominant east-west striking veins which are supplemented by veins that are oblique to the east-west strike;
- As demonstrated by the 4Amigos vein corridor, gold grade distribution is erratic and nuggety which is not uncommon in these types of vein systems;
- The 2022 and 2021 drilling did intersect zones of significant quartz vein thickening, which are auriferous and geochemically anomalous;
- A geochronology study has put the time of the emplacement of the Westmore intrusive at 189.6 Ma (Early Jurassic). Notable examples of gold deposits in the Eskay Camp of a similar age are Brucejack and Snip;
- Geochemically, the high-grade veins occurring in the intrusive and the encompassing mafic volcanic rock at Westmore are similar;
- The associated Au-Ag-Cd-Pb-Te-Zn geochemical signature is recognized in veins occurring within the mafic volcanic unit that flanks the west-northwest side of the Westmore intrusive and on the southeast side of the intrusive where mafic volcanic hosted and very steeply dipping quartz veins have a measured thickness at surface of up to 7.7 m;
- Importantly, this geochemical signature can be utilized to vector to potentially favorable quartz veins within the intrusive and surrounding country rock;
- Structural interpretation of the Westmore vein corridor settings is ongoing. LiDAR results collected in 2022 have provided an excellent platform to do structural interpretation at Westmore and on the Foremore property as a whole;
- Preliminary interpretation of the setting of the Westmore Intrusive is that of a possible tight, anticlinal fold structure. The axis of this fold is oriented slightly north of an east-west direction. The vast majority of the gold bearing veins mapped and sampled at Westmore conform to the interpreted orientation of the fold axis. There is a noticeable increase in quartz vein thickness in some veins mapped on surface and intersected by drilling to the south, away from the interpreted fold axis. This is a possible indication of a more ductile setting within the outer limbs of the fold as opposed to a more brittle deformation occupying the area of the fold axis. A more ductile setting may be more amenable to a vein thickening scenario within the limbs of the interpreted fold. Fold structures and zones of possible dilation are excellent conduits for fluid flow and traps for gold deposition.

Sassy continues to map and interpret the vein corridors recognized at the Westmore intrusive. The corridors highlighted in this news release (Herve, 4Amigos and South Cliff) are all open along strike and to depth. It is also important to note that exploration; prospecting and drilling at Westmore has thus far been focused in areas of maximum exposure. The eastern half of the intrusive remains very underexplored and drilling does suggest the intrusive and the vein corridors continue underneath the More Creek Glacier to the south and most likely to the east.

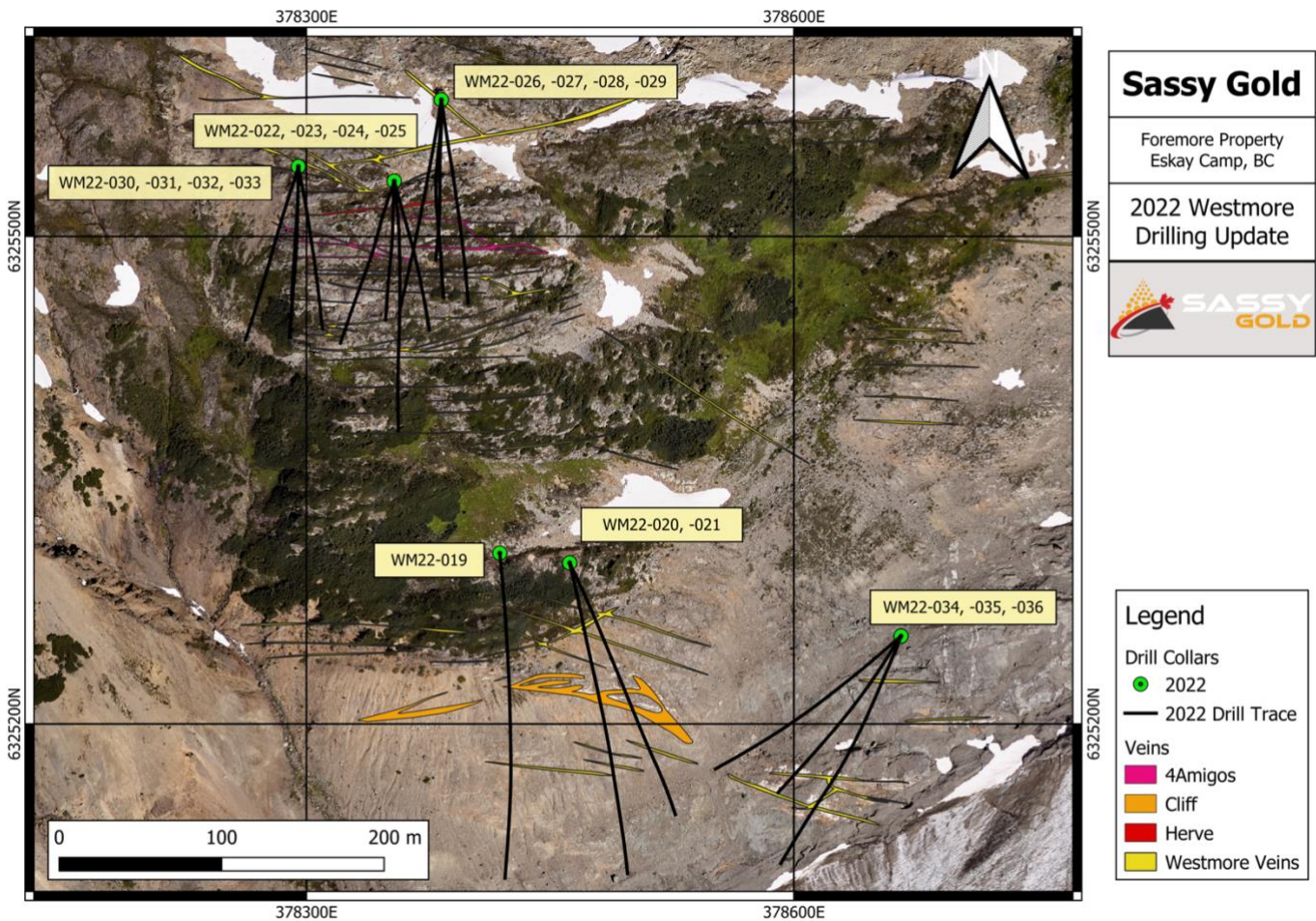
### 2022 Drill Intersection Highlights - 2022 Westmore Discovery Zone

Drillhole Id	From (m)	To (m)	Length (m)	Au (g/t)	Ag (g/t)	Vein
WM22-019	50.94	52.20	1.26	3.52	29.75	
WM22-019	65.55	67.96	2.14	3.14	14.04	
Including	65.55	66.14	0.59	11.55	20.70	
WM22-019	269.41	269.71	0.30	2.21	9.89	
WM22-020	106.48	106.78	0.30	2.99	8.17	
WM22-020	116.10	128	11.90	0.52	3.88	South Cliff Vein
Including	118.00	122.00	4.00	1.16	3.84	South Cliff Vein
Including	118.00	120.00	2.00	1.78	5.52	South Cliff Vein
WM22-021	75.00	75.45	0.45	0.38	76.40	
WM22-021	102.98	110.93	7.95	1.01	0.97	South Cliff Vein
Including	104.19	110.26	6.07	1.24	1.17	South Cliff Vein
Including	107.60	110.26	2.66	2.13	1.54	South Cliff Vein
WM22-021	150.70	151.60	0.90	0.24	51.00	
WM22-021	261.08	262.56	0.30	4.87	0.88	
WM22-022	38.96	39.79	0.83	3.94	8.79	4Amigos
Including	38.96	39.49	0.53	5.98	13.55	4Amigos
WM22-023	48.14	48.95	0.81	5.56	13.25	4Amigos
WM22-024	23.53	25.55	2.02	2.02	15.27	Herve Vein
Including	25.25	25.55	0.30	11.05	14.60	Herve Vein
WM22-024	42.76	43.15	0.39	1.41	3.54	4Amigos
WM22-024	165.18	166.00	0.82	1.48	12.85	
WM22-025	12.93	13.23	0.30	3.88	27.50	Herve Vein
WM22-025	44.91	45.58	0.67	10.55	9.54	4Amigos
WM22-025	86.35	86.77	0.42	0.66	37.20	
WM22-025	130.84	131.49	0.65	2.31	26.13	
WM22-026	81.90	85.56	0.66	1.21	9.52	
WM22-026	97.75	99.07	1.32	1.71	3.05	4Amigos
Including	98.38	99.07	0.69	3.12	5.06	4Amigos
WM22-027	123.34	124.81	1.47	0.06	0.59	
WM22-028	108.14	110.15	2.01	0.18	1.20	
WM22-029	108.10	108.80	0.70	12.10	21.50	4Amigos
WM22-029	204.00	205.55	1.55	1.10	5.43	
WM22-029	216.70	217.00	0.30	0.81	33.70	
WM22-030	26.09	26.49	0.40	14.70	20.10	Herve Vein
WM22-030	43.20	43.75	0.55	1.10	26.20	4Amigos
WM22-030	60.19	60.81	0.62	6.45	3.36	
WM22-030	121.38	121.98	0.60	1.03	19.25	
WM22-031	32.60	33.00	0.40	2.46	4.85	Herve Vein
WM22-031	56.15	56.65	0.50	5.61	85.90	4Amigos
WM22-032	44.88	45.92	1.04	0.33	3.36	4Amigos
WM22-032	63.57	66.71	3.14	1.35	2.53	
Including	63.57	64.00	0.43	9.36	7.67	
WM22-032	97.60	98.10	0.50	1.90	22.20	

WM22-033	27.65	28.00	0.35	74.60	47.30	Herve Vein
WM22-033	45.45	46.80	1.35	4.48	9.49	
Including	46.00	46.80	0.80	7.38	14.15	4Amigos
WM22-034	No significant results					
WM22-035	79.90	80.20	0.30	3.52	5.91	
WM22-035	194.50	198.50	4.00	0.64	2.05	
Including	196.65	198.50	1.85	1.25	4.04	
Including	196.65	197.60	0.95	2.11	7.66	
Including	197.30	197.60	0.30	5.82	13.20	
WM22-035	207.00	207.30	0.30	1.26	16.25	
WM22-036	153.50	154.24	0.74	2.05	29.30	

Note: Above intercepts are drill hole lengths – true widths unknown at this time.

### 2022 Westmore Drill Hole Location Map

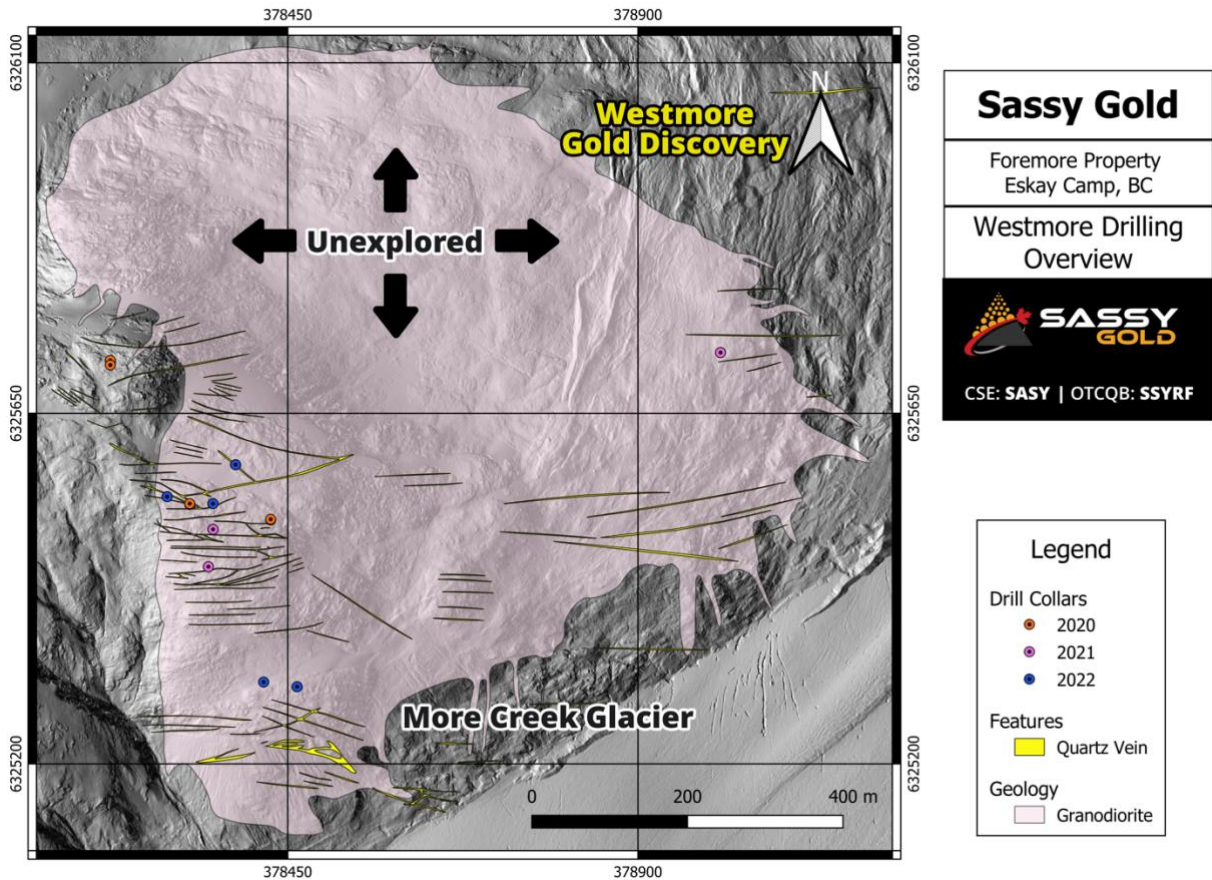




### Westmore 2022 Drill Hole Location Details

Drill Hole #	Easting (UTM)	Northing (UTM)	Elevation (ASL_m)	Azimuth (°)	Dip (°)	Depth (m)	Start Date	End Date
WM22-019	6325305	378419	1421	175	-50	322	07/22/22	07/26/22
WM22-020	6325299	378462	1404	156	-50	258	07/26/22	07/29/22
WM22-021	6325299	378462	1404	168	-50	303	07/29/22	07/31/22
WM22-022	6325534	378354	1533	180	-45	219	08/01/22	08/03/22
WM22-023	6325534	378354	1533	180	-60	176	08/03/22	08/04/22
WM22-024	6325534	378354	1533	195	-53	175	08/04/22	08/05/22
WM22-025	6325534	378354	1533	165	-53	157	08/05/22	08/06/22
WM22-026	6325584	378383	1519	180	-45	177	08/06/22	08/07/22
WM22-027	6325584	378383	1519	180	-60	204	08/07/22	08/08/22
WM22-028	6325584	378383	1519	170	-53	210	08/09/22	08/10/22
WM22-029	6325584	378383	1519	190	-53	222	08/10/22	08/11/22
WM22-030	6325543	378295	1548	180	-45	151	08/11/22	08/12/22
WM22-031	6325543	378295	1548	180	-60	169	08/12/22	08/13/22
WM22-032	6325543	378295	1548	195	-53	184	08/13/22	08/14/22
WM22-033	6325543	378295	1548	170	-53	166	08/14/22	08/15/22
WM22-034	6325254	378666	1277	215	-45	181	08/15/22	08/16/22
WM22-035	6325254	378666	1277	230	-50	226	08/16/22	08/18/22
WM22-036A	6325254	378666	1277	200	-45	15	08/18/22	08/18/22
WM22-036	6325254	378666	1277	200	-45	225	08/18/22	08/20/22
<b>Total</b>						3740		

### Westmore Drilling 2020–2022



## **Sassy at PDAC – Booth #3246**

Sassy Gold looks forward to meeting investors at **PDAC 2023**, the world's premier mineral exploration and mining convention, in Toronto from Sunday, March 5 through Wednesday, March 8.

Visit us at Booth #3246.

## **Quality Assurance/Quality Control**

Sassy implemented an industry-standard QA/QC program for all field samples and drill core samples collected during its 2022 exploration program. The company inserted QC blanks and standards at pre-determined intervals. Drill core samples were cut in half by rock saw. Half of the core remained in the labeled interval in the core box, the other half was placed in clear plastic sample bags together with pre-numbered sample tags and remained on site until transportation to the lab. Samples were transported and submitted directly by Company personnel to the ALS prep lab at Terrace, B.C., when there was capacity. Some shipments went directly to ALS facilities in Kamloops and North Vancouver. Initially, all rock and drill core samples were crushed to 70% passing 2mm, split to 500g, and pulverized to a pulp with 85% passing 75 micrometres. The pulps were then shipped/processed at ALS facilities in Kamloops and Vancouver where they were fire assayed for gold by 50g fire assay with atomic absorption finish (AAS), 48 elements by multi-element ICP-MS, 4-acid digestion. Over-limit analyses for Ag, Cu, Pb, Zn were performed utilizing the Ore Grade, 4-Acid, ICP-AES procedure. ALS is an accredited lab independent of Sassy Gold.

## **Qualified Person**

The technical information in this news release has been reviewed and approved by Ian Fraser, P.Geo., Vice-President of Exploration for Sassy Gold. Mr. Fraser is the Qualified Person responsible for the scientific and technical information contained herein under National Instrument 43-101 standards.

## **About Sassy Gold Corp.**

Sassy is an exploration stage resource company currently engaged in the identification, acquisition and exploration of high-grade precious metal and base metal projects in North America. Its focus is the Foremore Project located in the Eskay Camp, Liard Mining Division, in the heart of Northwest B.C.'s prolific Golden Triangle. Sassy is also earning up to a 100% interest in the Highrock Uranium Project in the Key Lake region of Saskatchewan. Sassy also holds significant equity positions in Gander Gold Corp., Galloper Gold Corp., and MAX Power Mining Corp.

## **Contact Information:**

Mark Scott

*Chief Executive Officer & Director*

[info@sassygold.com](mailto:info@sassygold.com)

Terry Bramhall

*Corporate Communications/IR*

1.604.833.6999 (mobile)

1.604.675.9985 (office)

terry.bramhall@sassygold.com

Adrian Sydenham

*MarketSmart Communications Inc.*

Toll-free: 1-877-261-4466

Email: [info@marketsmart.com](mailto:info@marketsmart.com)

## Caution Regarding Forward Looking Statements

This news release contains “forward-looking statements” and “forward-looking information” (collectively referred to herein as “forward-looking statements”) within the meaning of applicable securities legislation. Forward-looking statements are statements that are not historical facts and are generally, but not always, identified by the words “expects”, “plans”, “anticipates”, “believes”, “intends”, “estimates”, “continues”, “projects”, “potential”, “budget” and similar expressions, or are events or conditions that “will”, “would”, “may”, “could” or “should” occur or be achieved. This news release contains forward-looking statements pertaining to: the closing of the Transaction and the ability for the Transaction to enhance shareholder value.

Although the Company believes that the material factors, expectations and assumptions expressed in such forward-looking statements are reasonable based on information available to it on the date such statements are made, undue reliance should not be placed on the forward-looking statements because the Company can give no assurances that such statements and information will prove to be correct and such statements do not guarantee future performance. Since forward-looking statements address future events and conditions, by their very nature they involve inherent risks and uncertainties.

Actual performance and results could differ materially from those currently anticipated due to a number of factors and risks. These include, but are not limited to known and unknown risks, including those set forth in the Company’s Management Discussion and Analysis (a copy of which can be found under Sassy’s profile on SEDAR at [www.sedar.com](http://www.sedar.com)). Accordingly, readers should not place undue importance or reliance on the forward-looking statements. Readers are cautioned that the list of factors is not exhaustive. Statements, including forward-looking statements, contained in this news release are made as of the date they are given and the Company disclaims any intention or obligation to publicly update or revise any forward-looking statements, whether as a result of new information, future events or otherwise, unless so required by applicable securities laws. The forward-looking statements contained in this news release are expressly qualified by this cautionary statement. Additional information on these and other factors that could affect the Company’s operations and financial results are included in reports on file with applicable securities regulatory authorities and may be accessed under the Company’s profile on SEDAR at [www.sedar.com](http://www.sedar.com).

*The CSE has neither approved nor disapproved the contents of this news release. Neither the CSE nor its Regulation Services Provider (as that term is defined in the policies of the CSE) accepts responsibility for the adequacy or accuracy of this release.*